

# PROTON 4

## Anchoring post

EN 795/A, CEN/TS 16415

Proton 4 is an anchor device complying with EN 795 type A. It is an anchor point for personal fall protection equipment. Proton 4 is intended for mounting directly to trapezoidal steel sheet roofing, if the sheet is an outer cover, and also if covered with an insulation material. With various configurations of the post the product can be used for a wide range of metal sheets.



### SPECIAL FEATURES



Protection for max. 3 users



Suitable for explosion-hazard zones

### PARAMETERS

Material	stainless steel AISI 304
Static strength	14 kN
Bore diameter of the catch point $\varnothing$	20 mm
Max. number of users	3

Material stainless steel

### PODSTAWA SŁUPKA

Material stainless steel

### POST

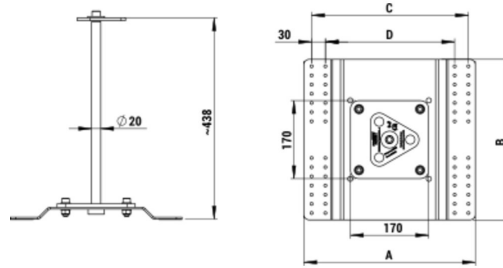
Height variants 430 mm

### VARIANTS

ref. no.	version	mounting hole spacing [mm]
Proton4A	anchor point + mounting kit for trapezoidal sheet metal	281/341
Proton4B	anchor point + mounting kit for trapezoidal sheet metal	366/430
Proton4C	anchor point + mounting kit for trapezoidal sheet metal	462/522
Proton4D 400	anchorage point + standing seam kit	400
Proton4D 580	anchorage point + standing seam kit	580

# PROTON 4 Anchoring post

## FIGURES



## DIMENSIONS

	A	B	C	D
Proton4A	373 mm	350 mm	341 mm	281 mm
Proton4B	462 mm	361 mm	430 mm	366 mm
Proton4C	550 mm	400 mm	522 mm	462 mm
Proton4D 400				
Proton4D 580				