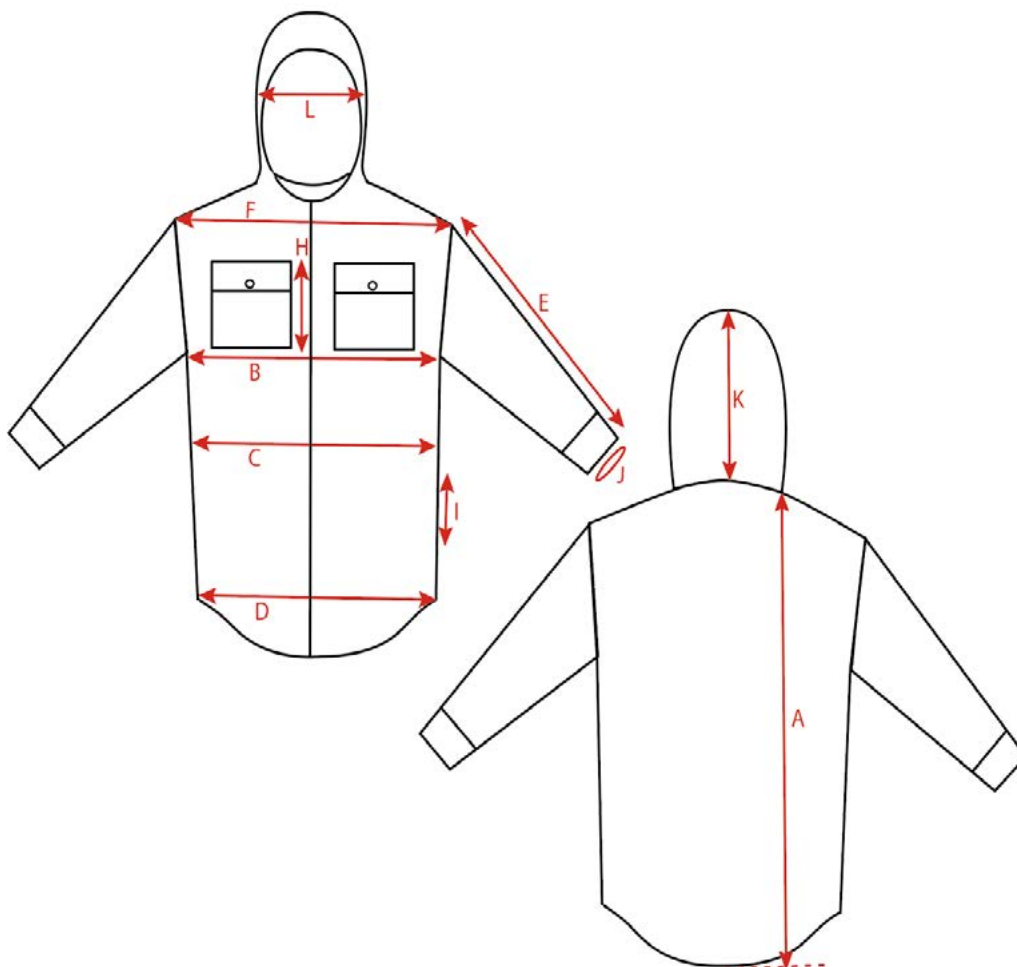


# Size chart - Woodline Canada Padded Fleecejacket with hood



## Garment measurements

| Measurement in cm |                           | XS   | S    | M     | L    | XL   | XXL  | 3XL  |
|-------------------|---------------------------|------|------|-------|------|------|------|------|
| A                 | Length fr HPS             | 76,0 | 78,0 | 80,0  | 82,0 | 84,0 | 86,0 | 88,0 |
| B                 | 1/2 Chest                 | 53,0 | 56,0 | 59,0  | 63,0 | 67,0 | 71,0 | 75,0 |
| C                 | 1/2 Waist                 | 51,0 | 54,0 | 57,0  | 61,0 | 65,0 | 69,0 | 73,0 |
| D                 | 1/2 Bottom                | 53,0 | 56,0 | 59,0  | 63,0 | 67,0 | 71,0 | 75,0 |
| E                 | Sleeve length fr shoulder | 59,0 | 60,5 | 62,0  | 63,5 | 65,0 | 66,5 | 67,3 |
| F                 | Shoulder across           | 51,0 | 53,5 | 56,0  | 58,5 | 61,0 | 63,5 | 65,5 |
| H                 | Chest pocket height       | 18,0 | 18,0 | 18    | 18,0 | 19,0 | 19,0 | 19,0 |
| I                 | Pocket height in sideseam | 15,0 | 15,0 | 15,00 | 15,0 | 16,0 | 16,0 | 16,0 |
| J                 | Sleeve opening            | 22,0 | 23,0 | 24,00 | 25,0 | 26,0 | 27,0 | 28,4 |
| K                 | Hood height               | 34,0 | 34,0 | 36,00 | 36,0 | 36,0 | 38,0 | 38,0 |
| L                 | Hood width mid.           | 24,0 | 24,0 | 26,00 | 26,0 | 26,0 | 28,0 | 28,0 |