

AT 024 - Anchor point



Maximum
2 users

The AT 024 plug-in anchor allows for effective anchoring of personal fall protection equipment to fixed structures. The basic components of the system are the lifting eye AT024-A and the socket AT024-B. All load-bearing parts of the anchor are made of stainless steel. The lifting eye (AT024 A) is designed so that it can be removed from its socket (AT 024 B) at the press of a button and transferred to another socket.

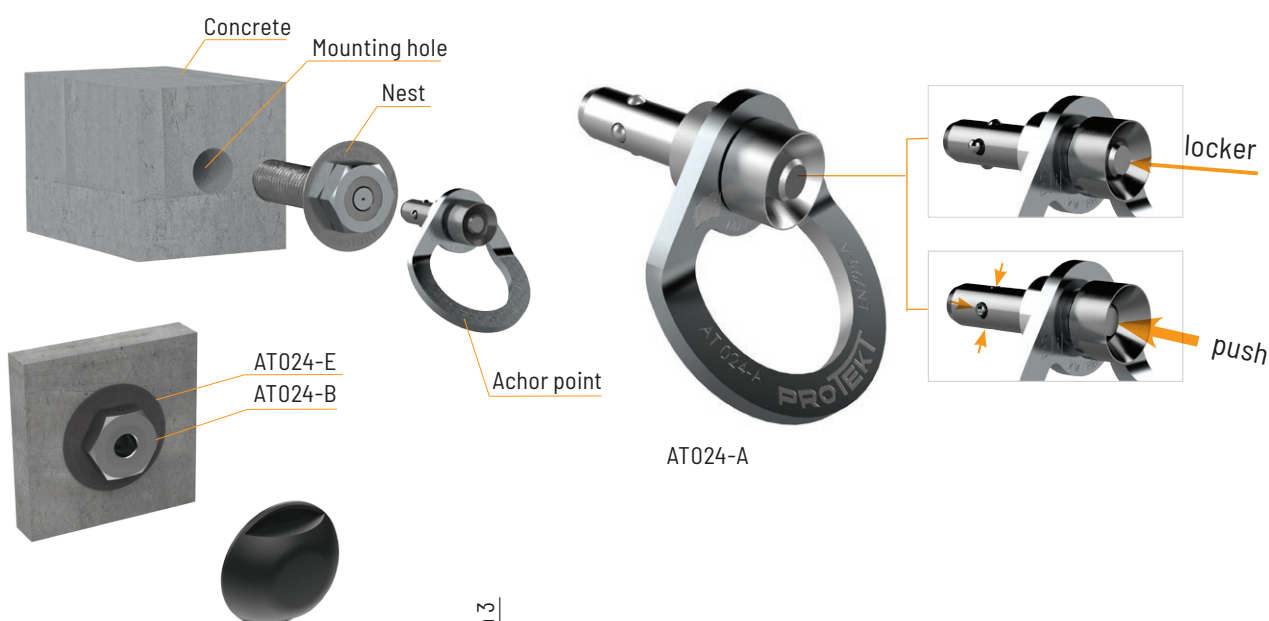
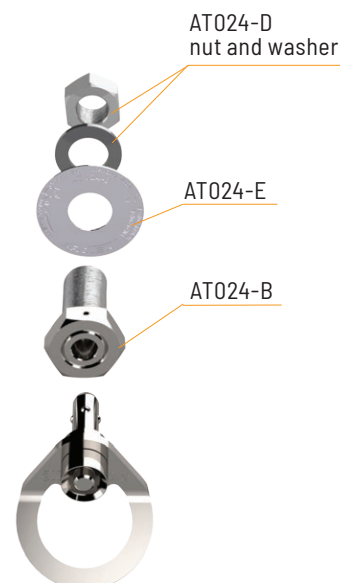
The AT024-B sockets are permanently installed in a fixed structure. For mounting in a metal base, the AT024-D kit (nut with washer) is used. A single coupling eye can be connected to multiple sockets located in different parts of the building and removed after use. When not in use, the sockets are covered with the aesthetically pleasing end caps AT024-F.

TECHNICAL DATA

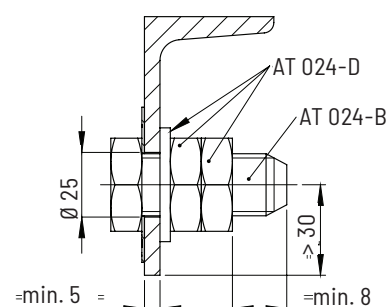
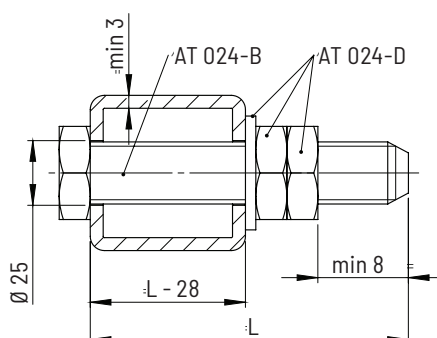
- Max. number of simultaneous users: - 2 person
- Static strength: not less 13 kN.

STANDARDS:

- EN 795:2012 - type A
- CEN/TS 16415:2013-type A



Attachment to
steel element



Attachment to
concrete substrate

