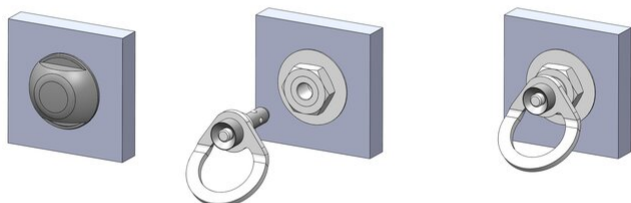


AT 024

Type A plug-in anchor point

EN 795/A, CEN/TS 16415



AT 024 consists of an AT024-A connection lug and an AT024-B socket. The sockets are installed in a fixed structure.

There are ready made sets depending on the installation method:

- 001 fixing to a concrete substrate with an injection resin (not included in the set)
- 002 fixing to masonry elements made of cellular concrete or brick
- 003 attachment to metal elements

AT024 is an anchoring point that can be attached to different substrates (concrete / brick / wood / metal). The attachment lug (AT024 A) is designed to be removed from the socket (AT024 B) when the button is pressed and transferred to another one.

AT024 A - swivel attachment lug

AT024 B - socket, length 68 / 135 / 240 / 320 / 490 mm

AT024 D - 2 nuts and M24 washer

AT024 E - information label

AT024 F - plug to cover unused sockets

AT024 G - thrust plate



**VIDEO
PRODUCT PRESENTATION**
<https://vimeo.com/396462335>

SPECIAL FEATURES



Protection for 2 users

PARAMETERS

Material	stainless steel	Max. number of users	2
Bore diameter of the catch point Ø	45 mm		

AT 024

Type A plug-in anchor point

VARIANTS

ref. no.	version	length [mm]
AT024-A	anchor point	-
AT024-B-135	mounting kit for concrete (using chemical anchor)	135
AT024-B-240	mounting kit for cellular concrete/brick	240
AT024-B-320	mounting kit for cellular concrete/brick	320
AT024-B-490	mounting kit for cellular concrete/brick	490
AT024-B-068	mounting kit for metal construction	68
AT024-B-135	mounting kit for metal construction	135
AT024-B-240	mounting kit for metal construction	240
AT024-B-320	mounting kit for metal construction	320
AT024-B-490	mounting kit for metal construction	490