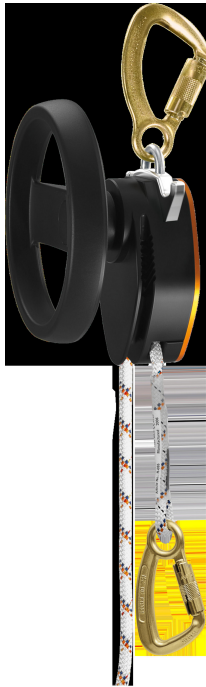


# DATASHEET

## MILAN 2.0 HUB



### GENERAL

Art.Nr:	A-028	Standards:	ANSI Z359.9-2021, EN 1496:2017/A, EN 341:2011/1A, MEETS CSA Z259.2.3:16/1/B
GTIN:	4030281155850	Net weight:	5.17 kg
E-class number:	40-21-01-01	Gross weight:	5.17 kg
Customs tariff number:	84798997		

# DATASHEET

## MILAN 2.0 HUB

MILAN 2.0 HUB is THE standard rescue device in the industry with additional lifting function. With the help of the hand wheel, the casualty can be lifted over a short distance to release his lanyard and lower him safely. The device is optimised for personal rescue. Note: When working at height, a suitable rescue concept based on a risk assessment is essential. MILAN offers a wide range of applications for different rescue scenarios. To master these techniques, users must be carefully trained by a SKYLOTEC-certified instructor who has been specially trained on the device. Intuitive operation due to rope guide and brake in the housing

### FEATURES

Colour:	Black, Orange, White
Lifting function:	Yes
Max. abseiling height:	500 m
Maximum load 1 person:	141.00 kg
Maximum load 2 persons:	280.00 kg
Maximum lifetime:	20 years
Maximum number of persons:	2
Maximum load:	280.00 kg
Minimum compatible rope diameter:	9.00 mm
Maximum compatible rope diameter:	9.00 mm
Max. Abseil speed:	0.90 m/s
Minimum temperature:	-35 °C
Maximum temperature:	60 °C
Panic function:	No
Rescue function:	Yes

### MATERIAL

Material:	Aluminium, Steel, Polyamide
-----------	-----------------------------