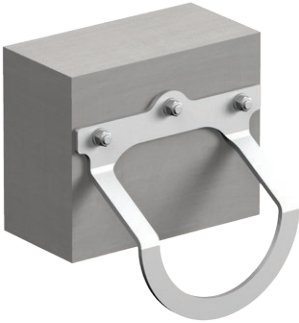
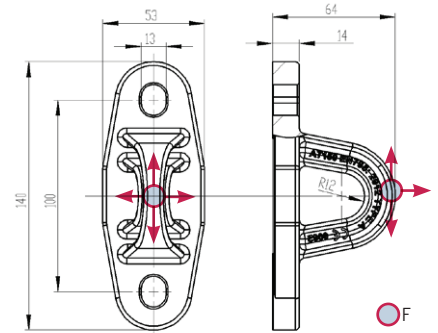




AT 150

Anchor point made of aluminium alloy, designed for 1 user, fixed with 2 bolts or anchors M12.

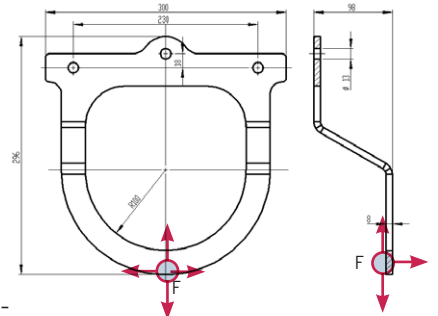
- EN 795/Af
- 1 user
- made of aluminium alloy
- assembly by means of 2 M12 bolts/mechanical anchors
- \varnothing hook hole 24 mm



AT 151

Large-size anchor point made of stainless steel, designed for 1 user, fixed with 3 bolts or anchors M12. Particularly useful when personal fall protection equipment needs to be connected using a telescopic pole.

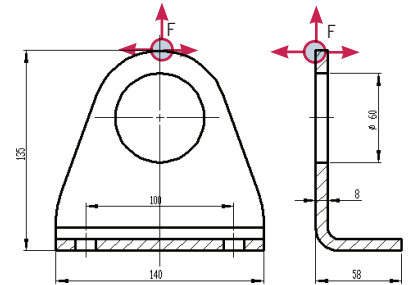
- EN 795/A
- 1 user
- made of stainless steel
- assembly by means of 3 M12 screws/mechanical anchors - Ø hook hole 200 mm
- works well in combination with a telescopic pole



AT 153

Robust anchor point made of stainless steel, designed for 1 user, fixed with 2 bolts or anchors M12.

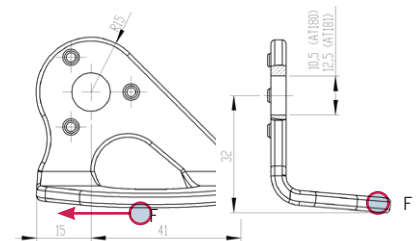
- EN 795/A
- 1 user
- made of stainless steel
- Ø hook hole 60 mm



AT 180
AT 181

Minimum-size anchor point made of stainless steel, designed for 1 user, fixed with 1 bolt or anchor M12 (AT 180) or M10 (AT 181).

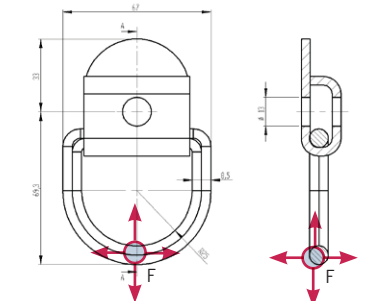
- Mounted using 2 M12 screws/mechanical anchors
- Ø hook hole 60 mm



AT 183

Anchor point with locking clip, made of stainless steel, designed for 1 user, fixed with 1 bolt or anchor M12.

- EN795/A
- 1 user
- made of stainless steel
- assembly with 1 screw/mechanical anchor M1
- Ø hook hole 18 mm



AT 152

Anchor point with movable locking clip, designed for 1 user.

FOR WIDER PRODUCT RANGE PLEASE REFER TO THE
MAIN CATALOGUE.

